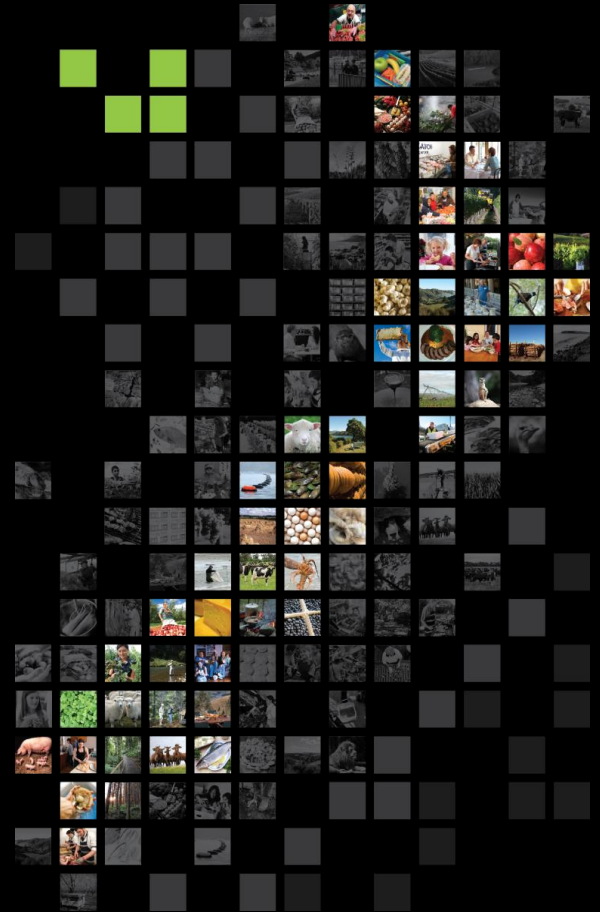


GROWING AND PROTECTING NEW ZEALAND

Post Border Biosecurity Surveillance, Incursion Investigation and Response

Brendan Gould

Manager Surveillance and Incursion
Investigation



Ministry for Primary Industries
Manatū Ahu Matua



Ministry for Primary Industries
Manatū Ahu Matua



To report suspected exotic land,
freshwater and marine pests, or exotic
diseases in plants or animals, call:

0800 80 99 66

Ministry for Primary Industries
Manatū Ahu Matua



To report suspected exotic land,
freshwater and marine pests, or exotic
diseases in plants or animals, call:

0800 80 99 66

Ministry for Primary Industries
Manatū Ahu Matua



Surveillance

Response

Biosecurity
system

Incursion
investigation

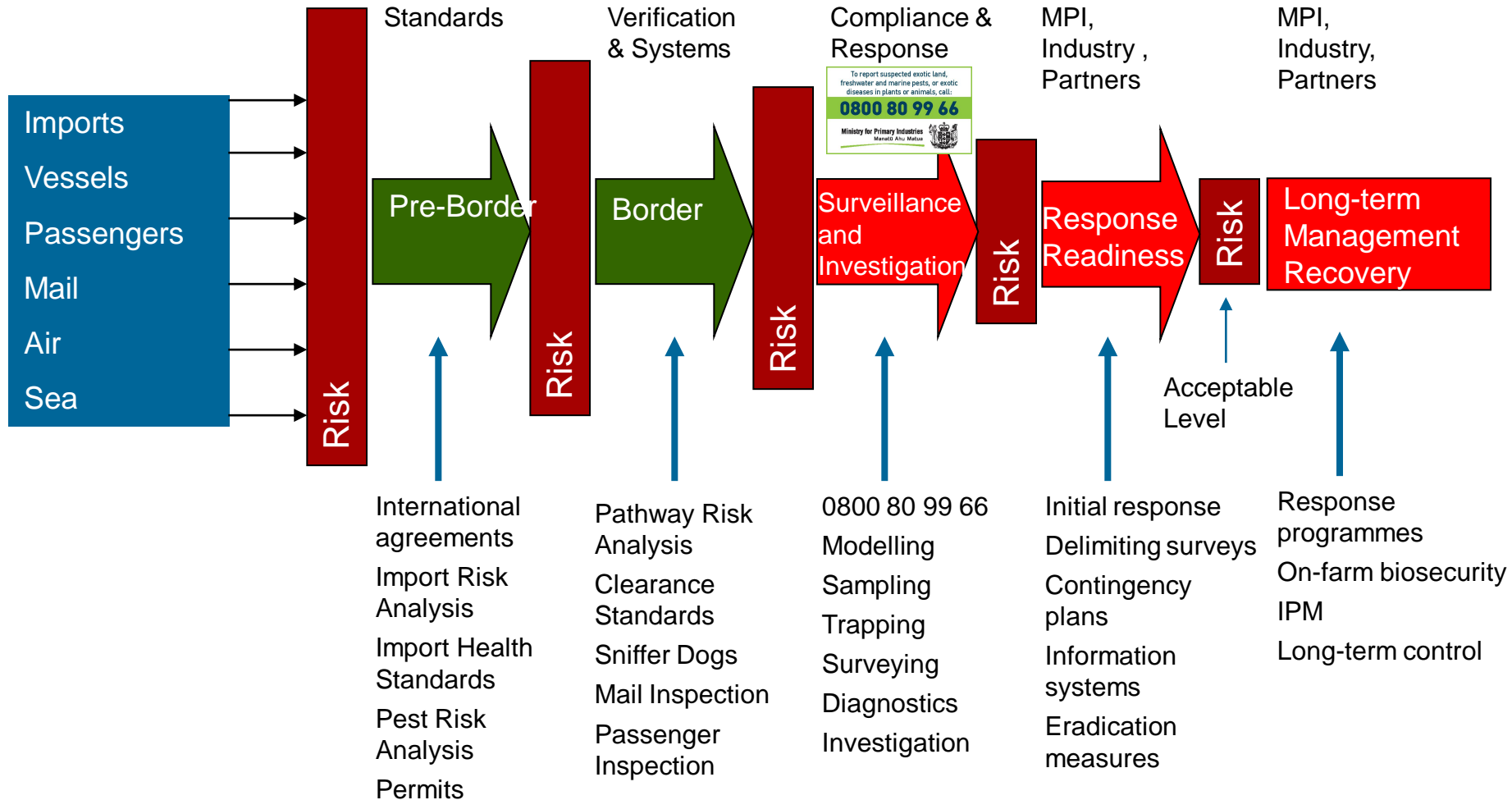
Response
under GIA....?

Ministry for Primary Industries
Manatū Ahu Matua



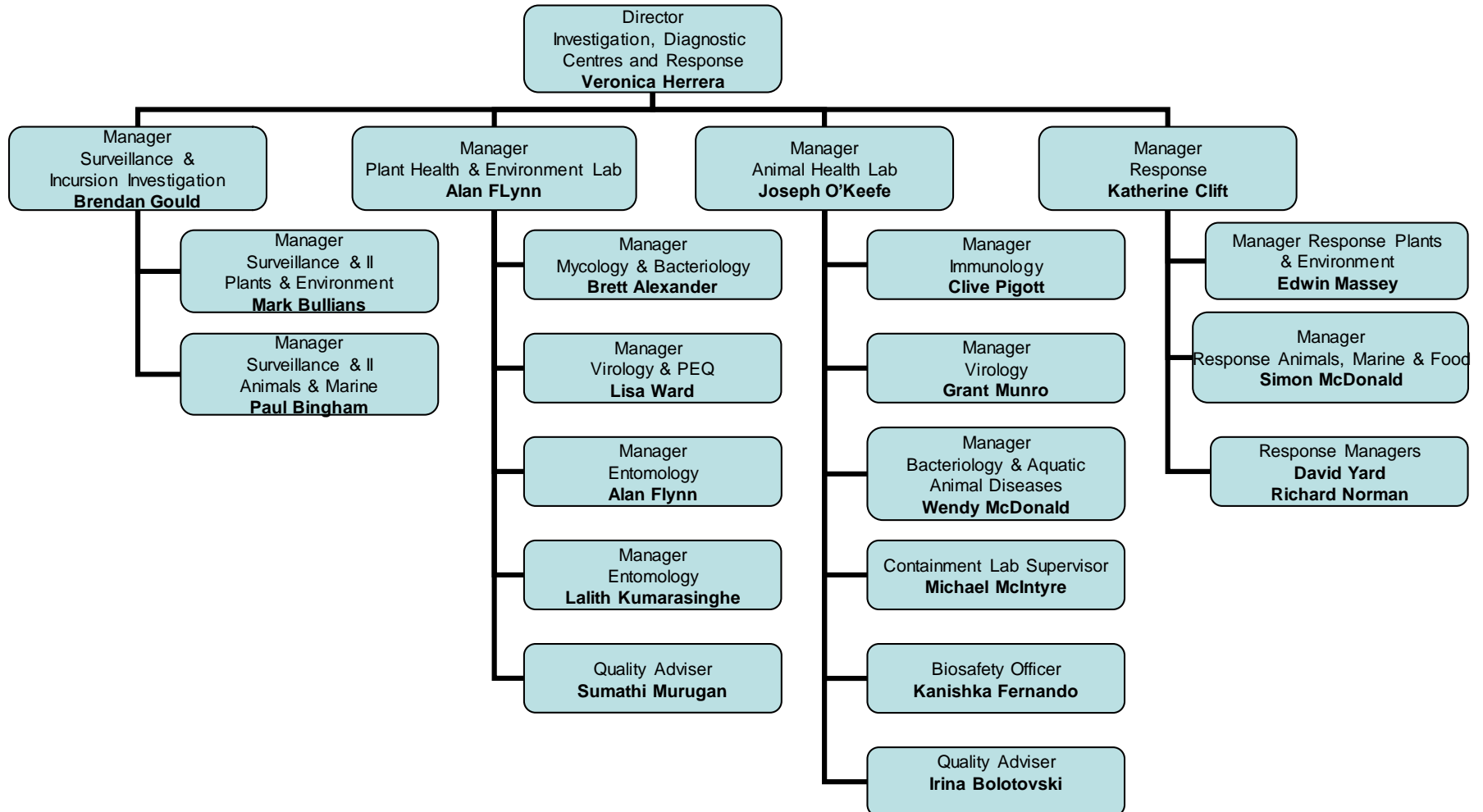
The Biosecurity System – Defence in Depth

Ministry for Primary Industries
Manatū Ahu Matua



IDCR

(Tamaki-Auckland, Wellington, Wallaceville, SWPD-Christchurch)



Our locations



Surveillance and Incursion Investigation

- Surveillance programmes
- Incursion investigation
- International reporting



Surveillance and Incursion Investigation

- Surveillance programmes
- Incursion investigation
- International reporting

“The power of zero”



+



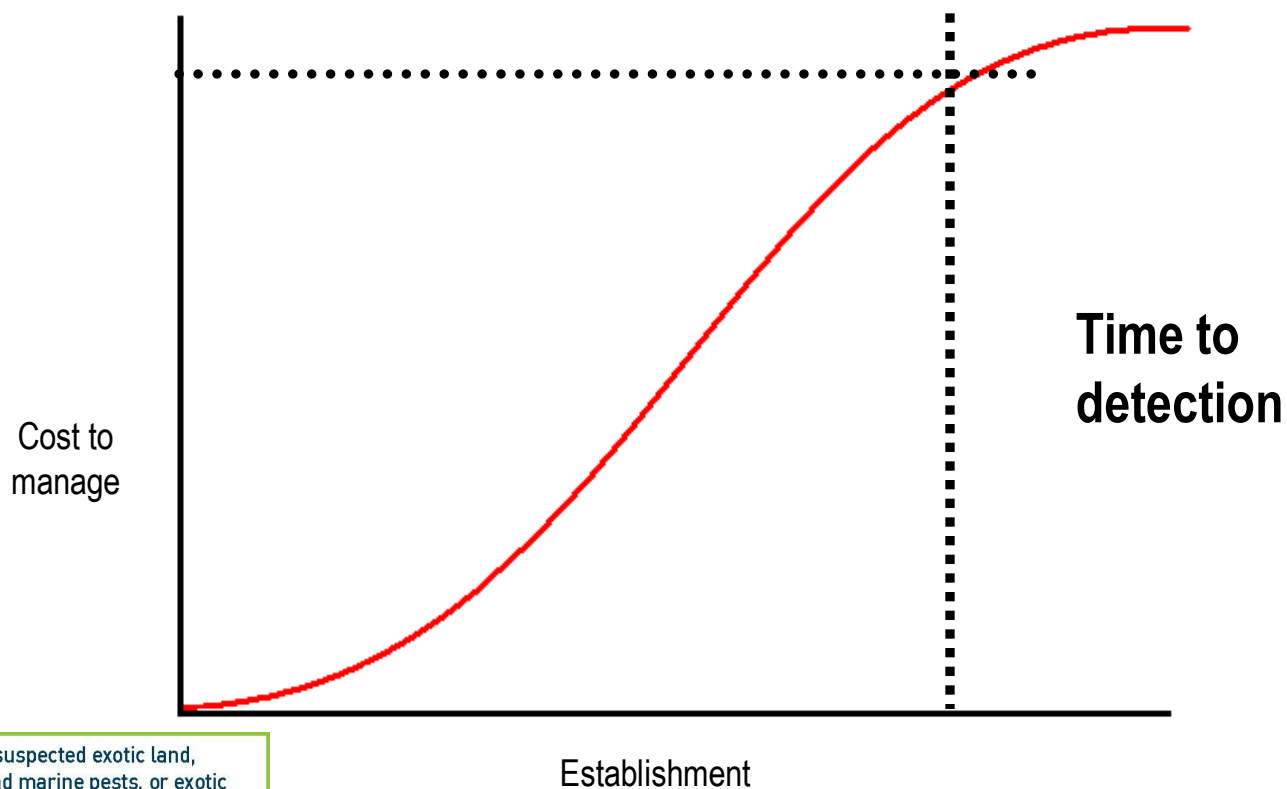
=

0

=

\$²

Early Detection



To report suspected exotic land, freshwater and marine pests, or exotic diseases in plants or animals, call:

0800 80 99 66

Ministry for Primary Industries
Manatū Ahu Matua



Surveillance System

Active/targeted surveillance

programmes:

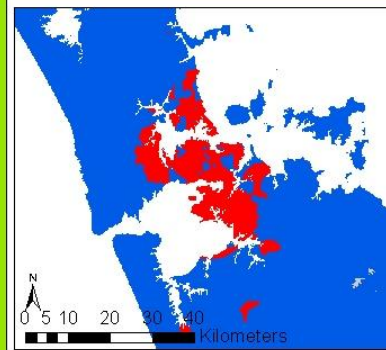
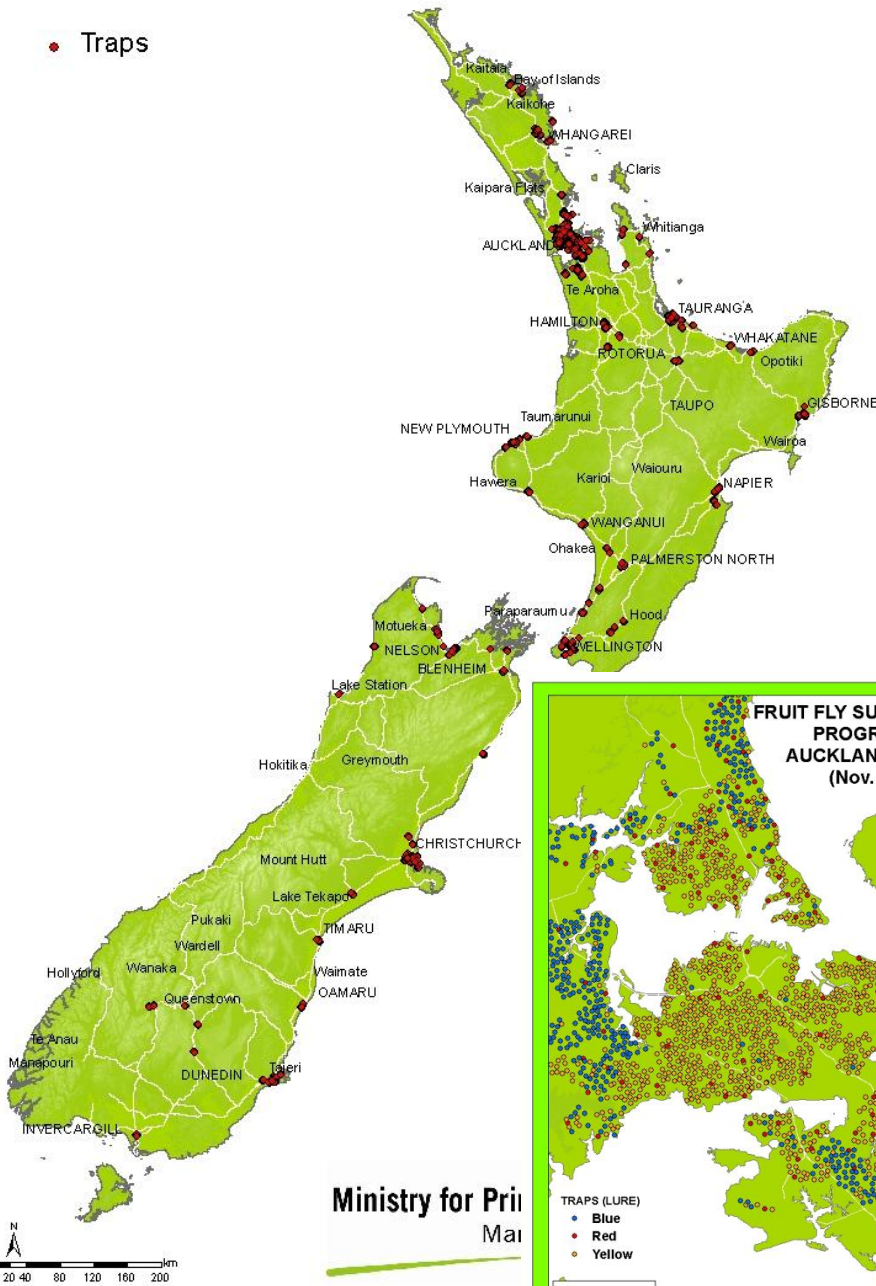
- TSE Surveillance Programme (0)
- Animal Health Information (0)
- Arbovirus Surveillance Programme (0)
- National Fruit Fly Surveillance Programme (0/7500)
- National Invasive Ant Surveillance Programme (16/45,000)
- Forest High Risks Site Surveillance Programme (5/1000)
- National Mosquito Surveillance Programme (0/12,000)
- Avian Influenza Surveillance Programme
- Gypsy Moth Surveillance Programme (0/1,500)
- Apiary Surveillance (0/350)
- Marine High Risk Site Surveillance Programme (4/5723)

Passive/General Surveillance:



FRUIT FLY SURVEILLANCE PROGRAMME (Nov. 2012)

• Traps



Risk map and fruit fly trapping layout (Map based on Thompson 2010)

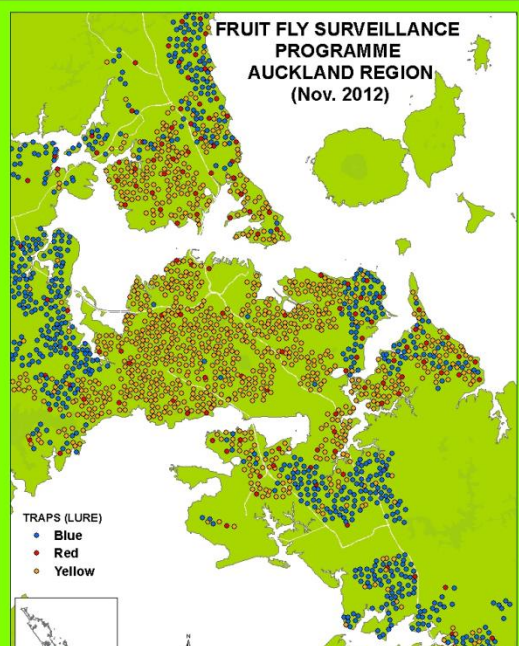
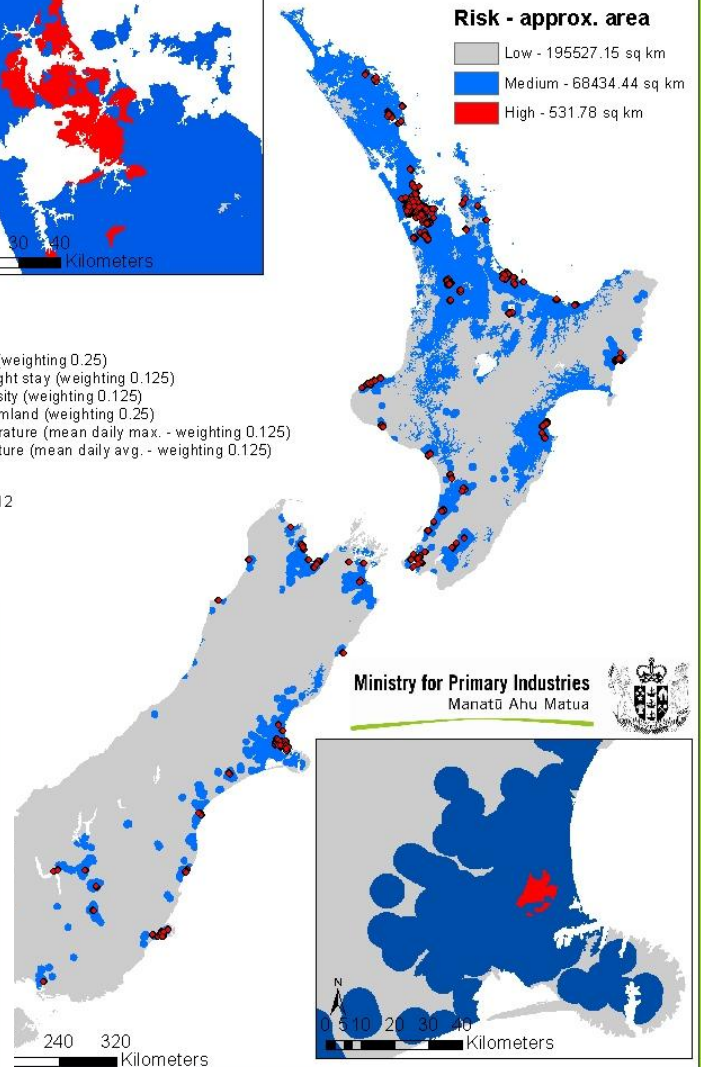
Risk - approx. area

- Low - 195527.15 sq km
- Medium - 68434.44 sq km
- High - 531.78 sq km

Baseline data:


- Arrivals at port (weighting 0.25)
- Location first night stay (weighting 0.125)
- Population density (weighting 0.125)
- Horticultural farmland (weighting 0.25)
- Summer temperature (mean daily max. - weighting 0.125)
- Winter temperature (mean daily avg. - weighting 0.125)

• Traps 2012



Reporting

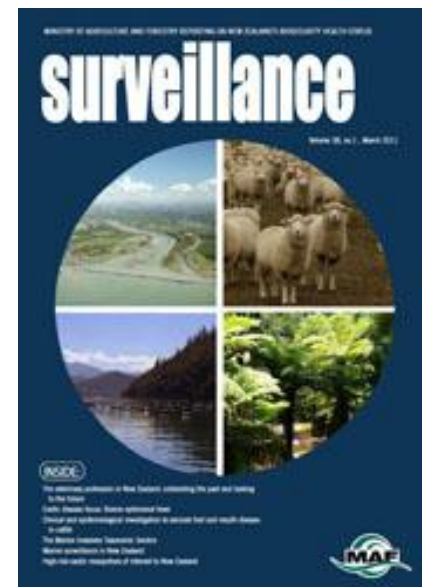
- International reporting –

-  - Office international des épizooties
(World Organisation for Animal Health)

- Regular reporting to provide evidence of freedom
- Adhoc reporting of positive detections

- National/International:

- *Surveillance magazine*
- (<http://www.biosecurity.govt.nz/publications/surveillance/index.htm>)



Incursion Investigation



Incursion Investigation:

- To investigate the presence of risk organisms, risk goods and risk pathways into NZ
- Describe & define the biosecurity risk
- Implement urgent measures
- Make recommendations to Response Group if a biosecurity risk remains (Rapid Assessment Report)
- Participate in Responses



Biosecurity Response Policy

- Sets out how the Ministry manages biosecurity responses to risk organisms that could harm people, the environment, and/or the economy
- See <http://www.biosecurity.govt.nz/biosec/pol/statements/response-policy>



Policy for MAF's Responses to Risk Organisms

ISBN 978-0-478-32159-3 (online)

July 2008

To report suspected exotic land, freshwater and marine pests, or exotic diseases in plants or animals, call:

0800 80 99 66


Ministry for Primary Industries
Manatū Ahu Matua



MPI's response model



Biosecurity Response Knowledge Base



Biosecurity Response KNOWLEDGE BASE

Using The Knowledge Base | Glossary | What's New?


Home | Response System | Processes & Procedures | People Capability | Operations Resources | Browse By |

Response System

An overview of the response system, access to the overarching *Policy for MAF's Responses to Risk Organisms*, and information on how response workstreams and activities fit together.

Processes & Procedures

Processes, procedures and other tools for biosecurity responses.



Using The Knowledge Base

Guide to this Knowledge Base website, and how to navigate around.

People Capability

Material for developing people to lead and manage biosecurity responses and complex projects.

Operations Resources

Training resources for operations staff.

Popular Templates

- Rapid Assessment Report
- Response Brief
- Operational Specifications
- Response Management Plan

What's New?

An up-to-date list of changes to the site.

Purpose of this Knowledge Base

The Biosecurity Response Knowledge Base (this website) contains processes, standards and other resources for leading and managing biosecurity responses in New Zealand. It is intended for use by MAF and partner organisations.

Browse By (most-popular tags)

Key pages and documents in this site have been given specific 'tags' (tags are like keywords or labels) to make them easier to find or group. Here are some of the most popular:

Workstream tags

- Response Strategic Leadership
- Planning And Intelligence
- Logistics

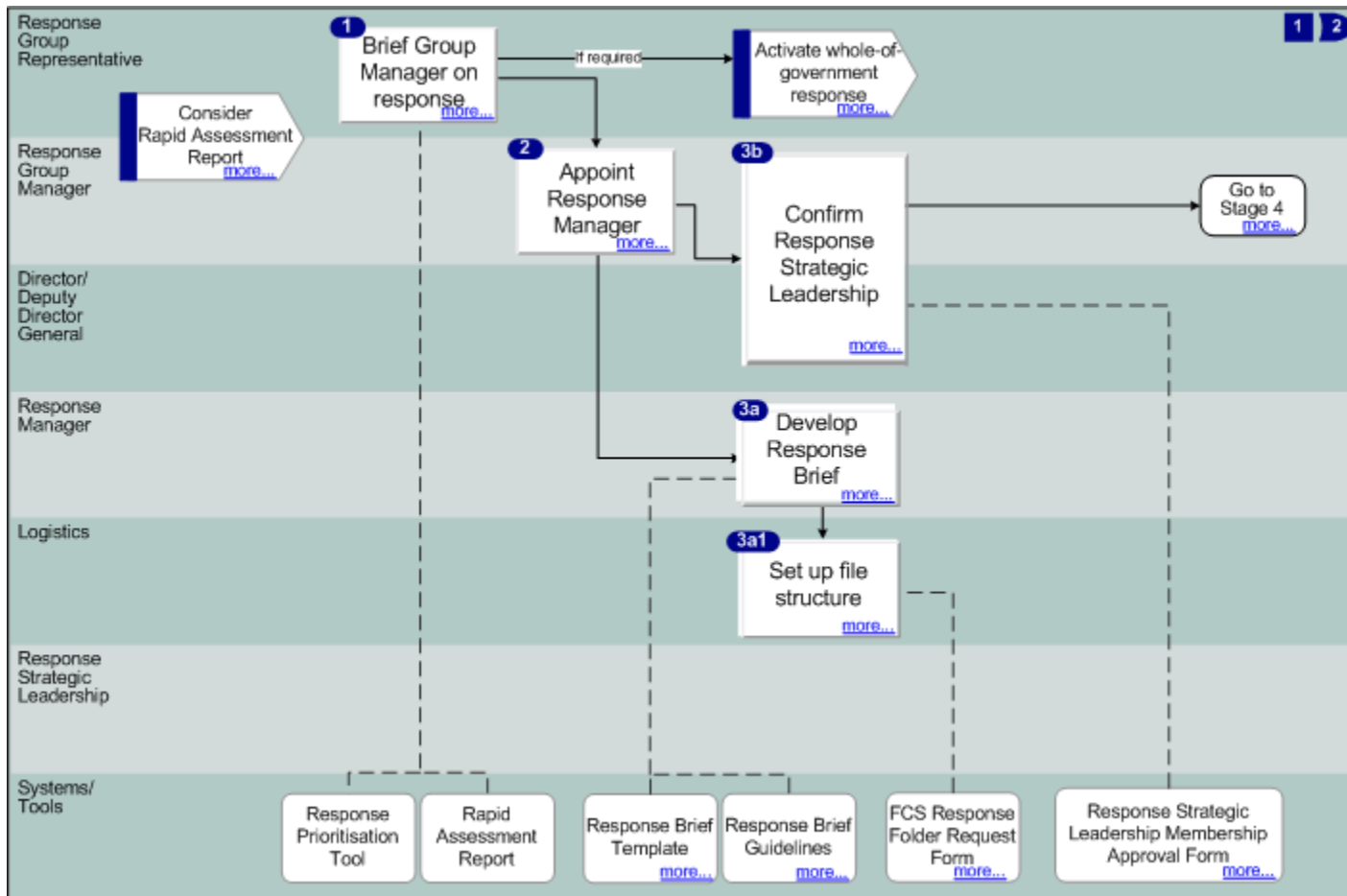
Content Type tags

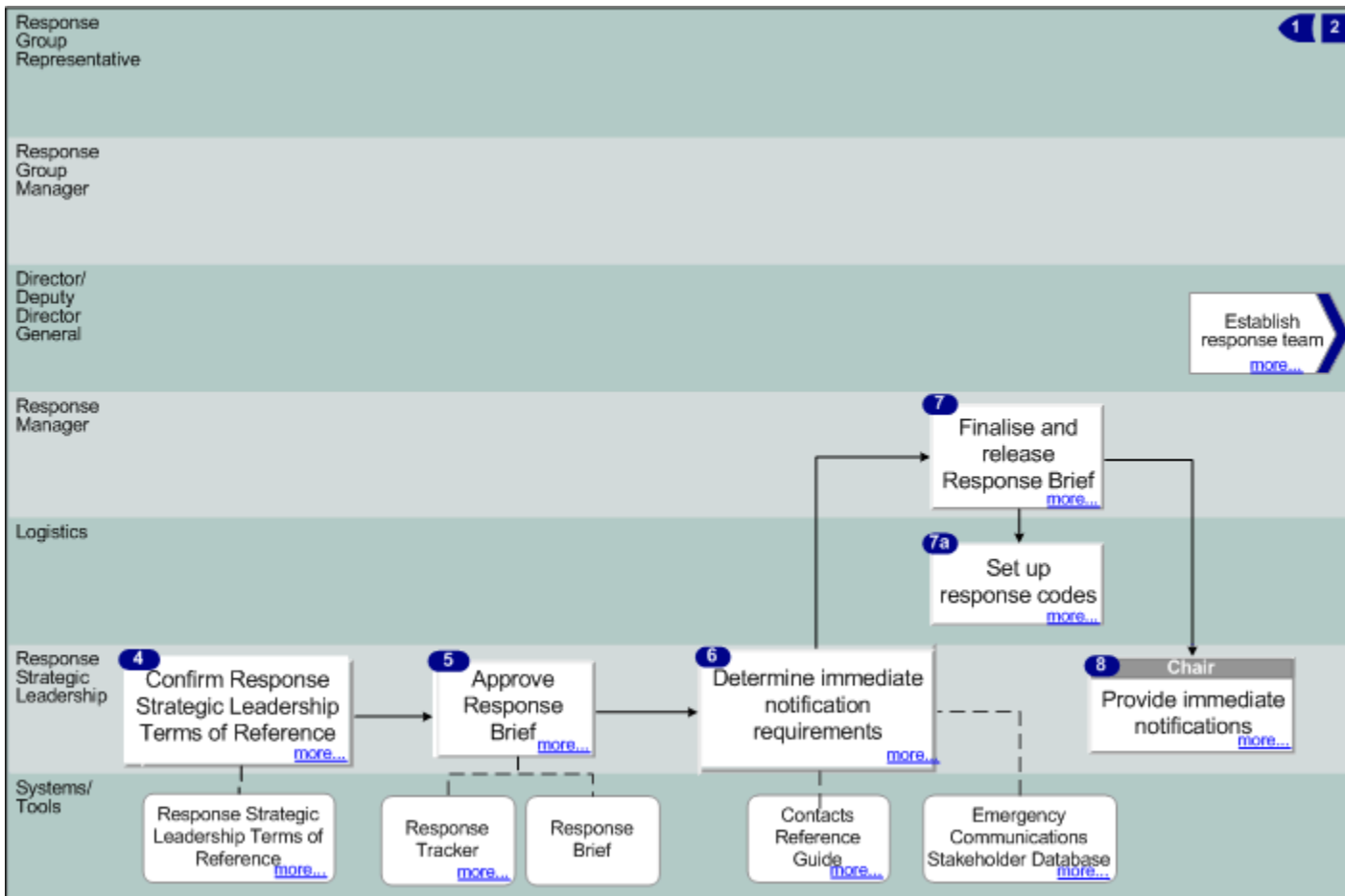
- Template
- Process
- Procedure

[BROWSE MORE >>](#)


About this Site | Disclaimer | Feedback | Glossary | Using the Knowledge Base | What's New?

http://brkb.biosecurity.govt.nz/ Local Intranet 125%





Post Border Statistics

	2012/2013 Financial year	2013/14 To date
Reports to:  <small>To report suspected exotic land, freshwater and marine pests, or exotic diseases in plants or animals, call: 0800 80 99 66</small> <small>Ministry for Primary Industries</small> <small>Manatū Ahu Matua</small>	~11,000 pa	~11,000 pa
Notifications to Investigators:	1528 (2167 PHEL)	328
Investigations Undertaken:	~710	~215
Rapid Assessment Reports (RAR) to Response	28	7
Responses Initiated (or under consideration)	17 (3)	6 (1)
RAR's stood down (no response initiated)	8	
Active Investigations		114
Active Responses (under consideration)		39 (7)



1,528

~11,000 pa

To report suspected exotic land,
freshwater and marine pests, or exotic
diseases in plants or animals, call:

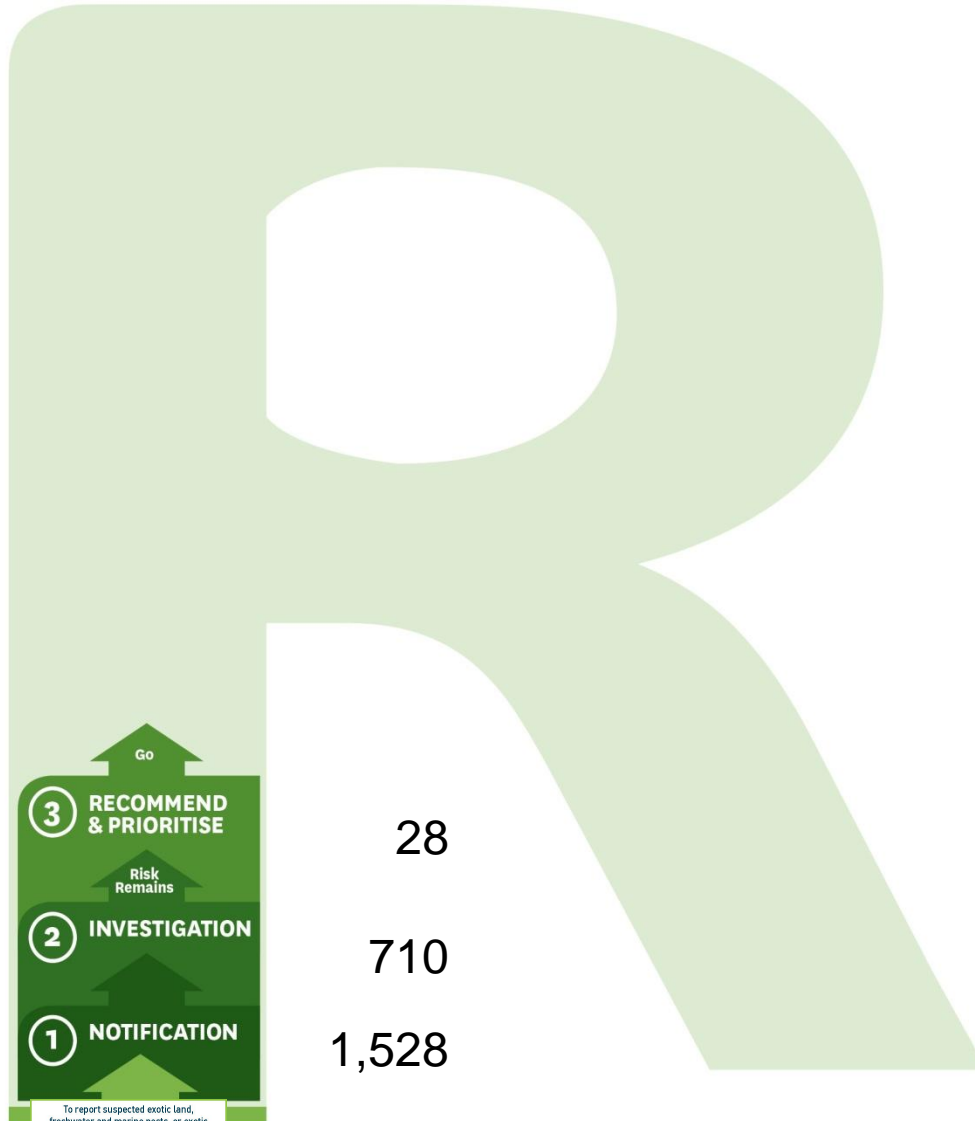
0800 80 99 66



To report suspected exotic land, freshwater and marine pests, or exotic diseases in plants or animals, call:

0800 80 99 66

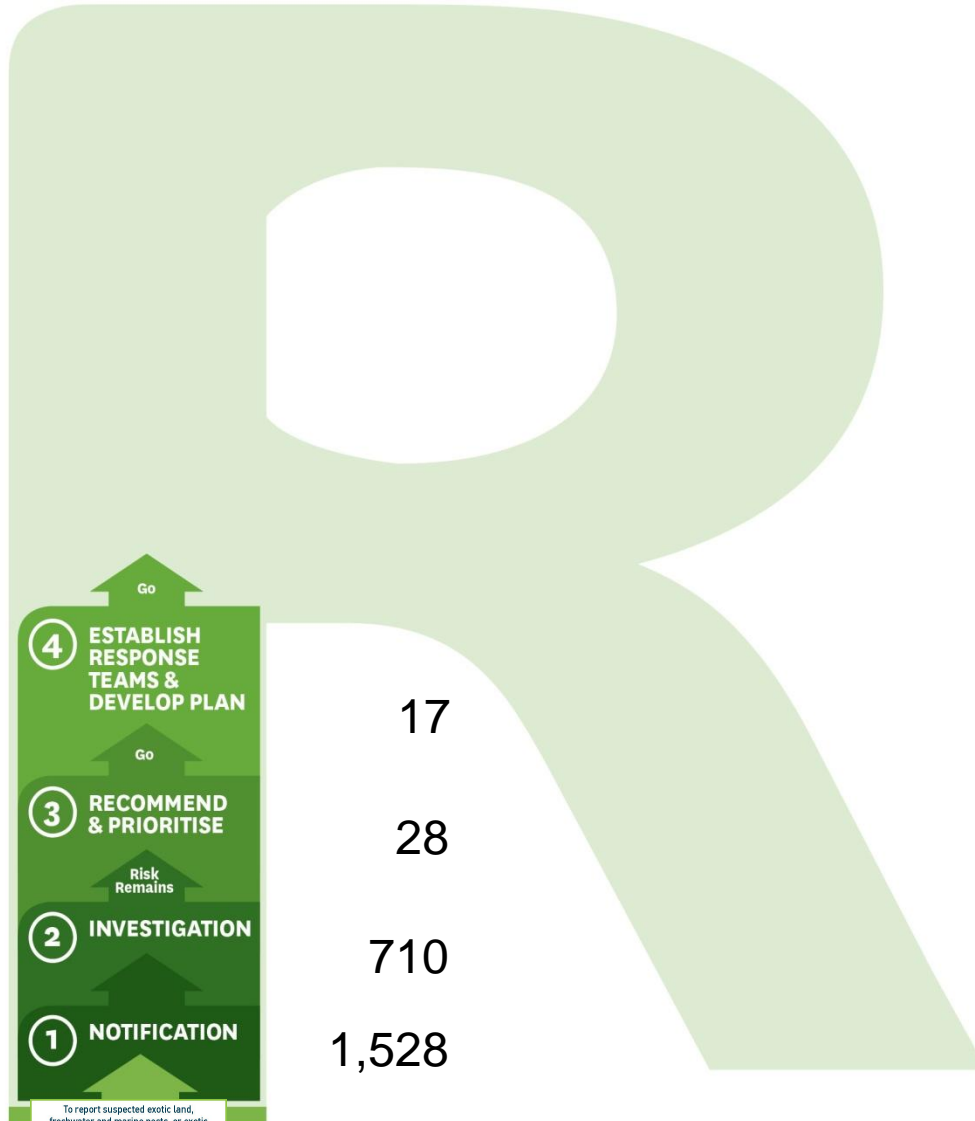
~11,000 pa



~11,000 pa

To report suspected exotic land, freshwater and marine pests, or exotic diseases in plants or animals, call:

0800 80 99 66



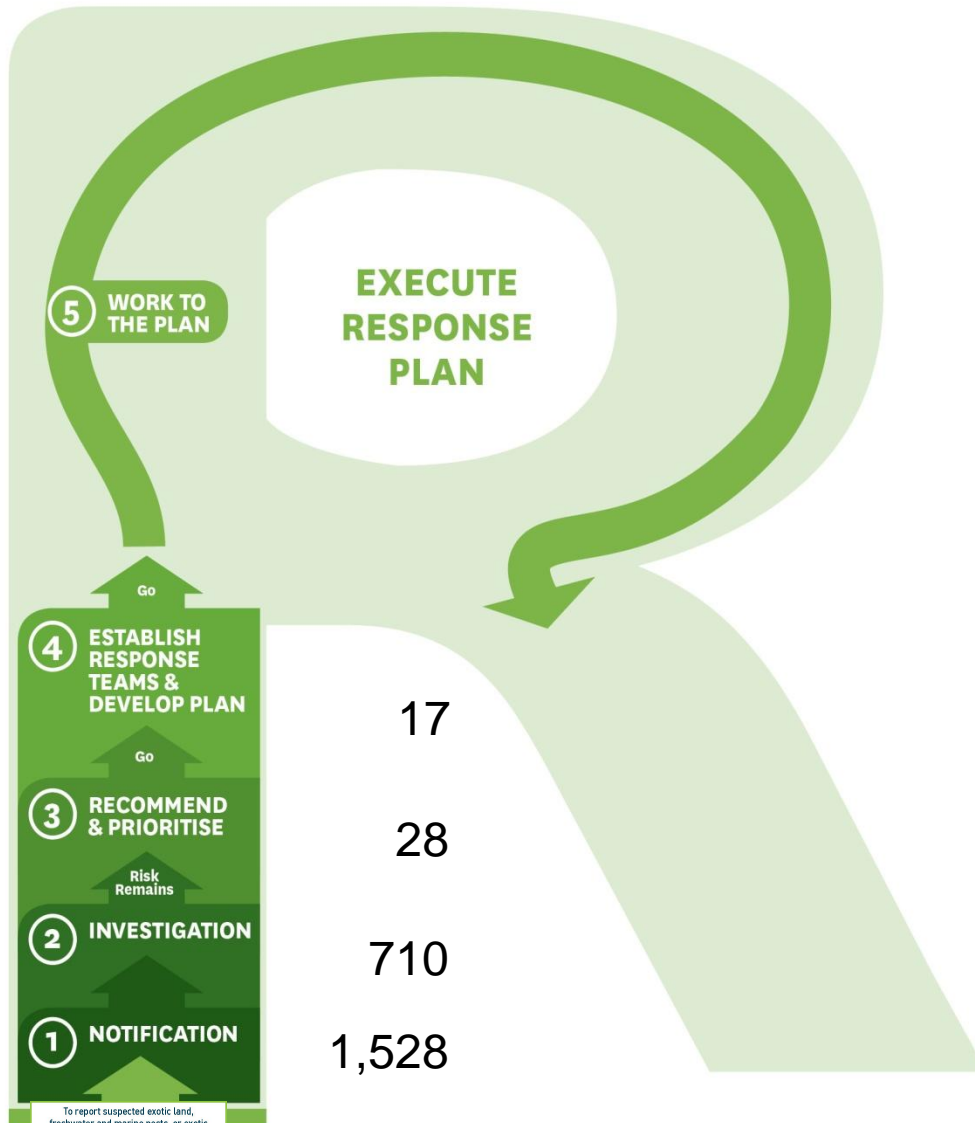
To report suspected exotic land, freshwater and marine pests, or exotic diseases in plants or animals, call:

0800 80 99 66

Ministry for Primary Industries
Ministry for the Environment



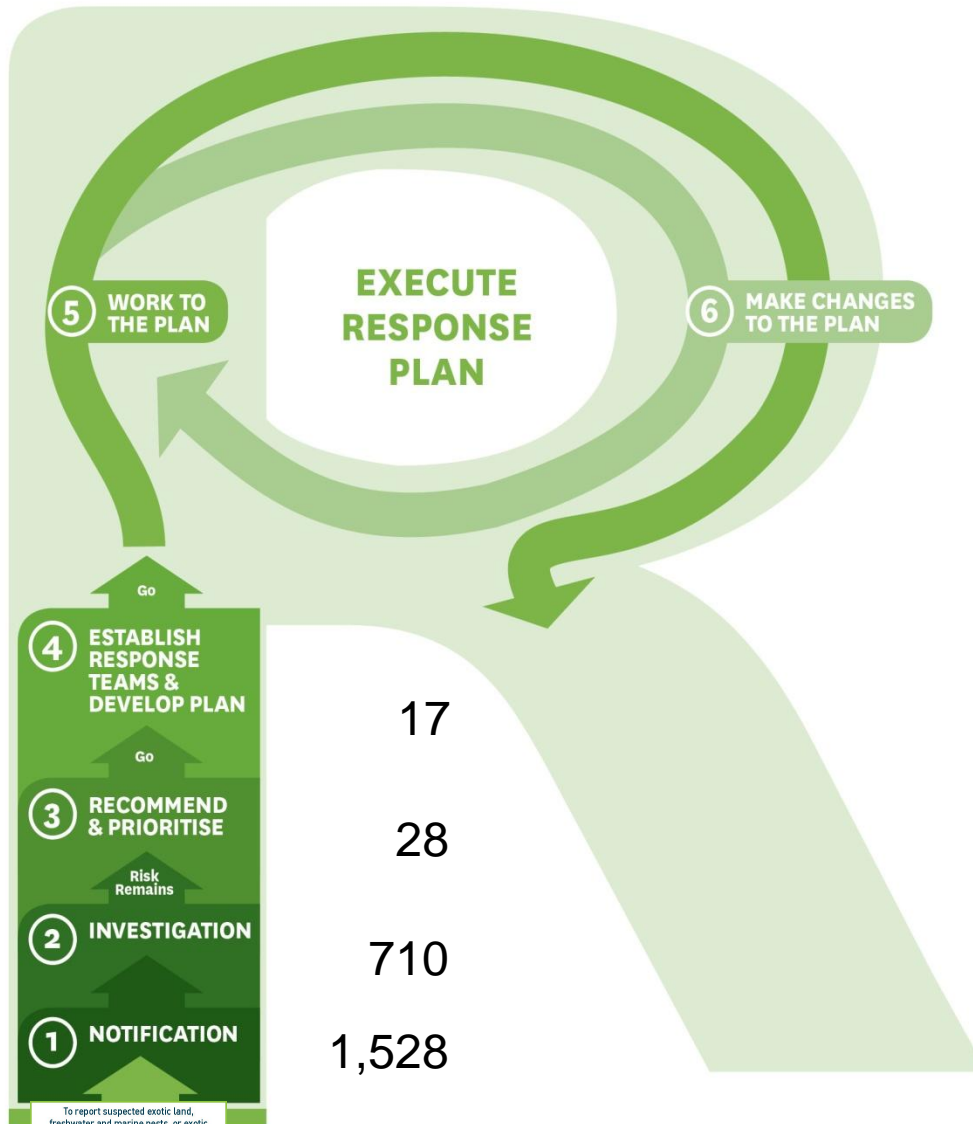
~11,000 pa



To report suspected exotic land, freshwater and marine pests, or exotic diseases in plants or animals, call:

0800 80 99 66

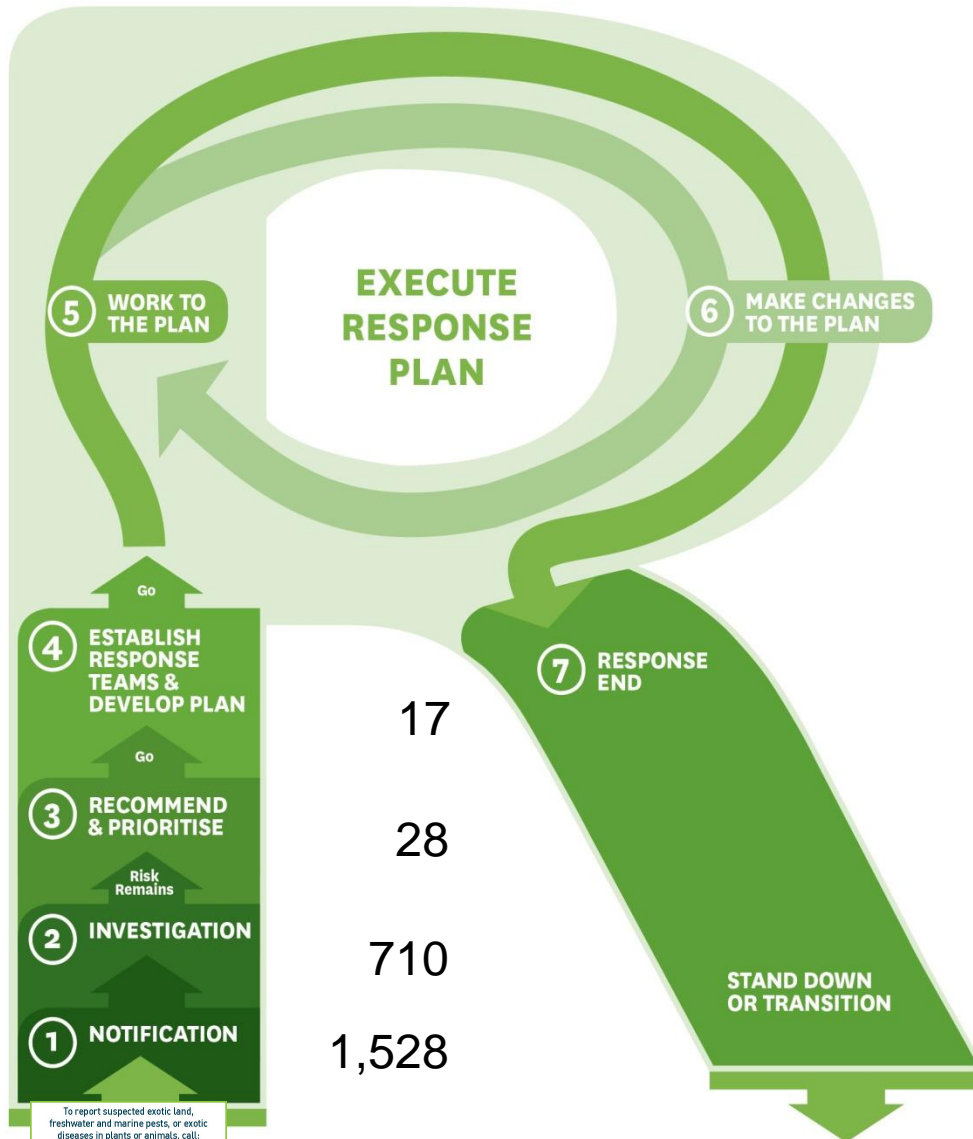
~11,000 pa



To report suspected exotic land, freshwater and marine pests, or exotic diseases in plants or animals, call:

0800 80 99 66

~11,000 pa



~11,000 pa

To report suspected exotic land, freshwater and marine pests, or exotic diseases in plants or animals, call:

0800 80 99 66

4

ESTABLISH RESPONSE TEAMS & DEVELOP PLAN

FROM RECOMMEND
& PRIORITISE

DRAFT

RESPONSE MODEL

AIM: Determine response outcome feasibility / assess & decide response plan to proceed

STRATEGIC DIRECTION & MONITORING

Command & Consensus

RESPONSE MANAGEMENT

Control & Recommend

IMPLEMENTATION PLANNING

4

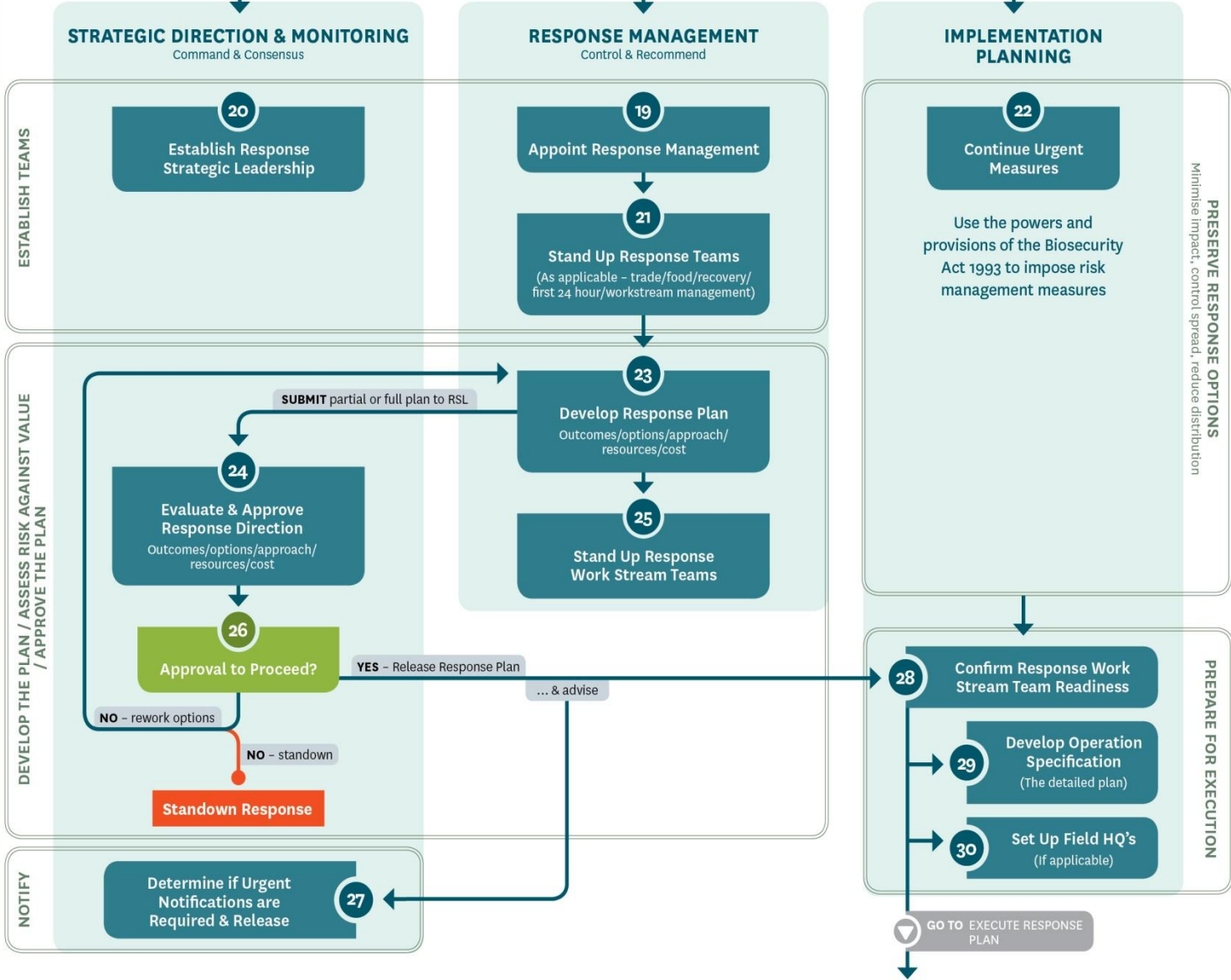
ESTABLISH RESPONSE TEAMS & DEVELOP PLAN

DRAFT

FROM RECOMMEND & PRIORITISE

RESPONSE MODEL

AIM: Determine response outcome feasibility / assess & decide response plan to proceed



STRATEGIC DIRECTION & MONITORING

Command & Consensus

RESPONSE MANAGEMENT

Control & Recommend

IMPLEMENTATION PLANNING

ESTABLISH TEAMS

20

Establish Response Strategic Leadership

19

Appoint Response Management

21

Stand Up Response Teams
(As applicable - trade/food/recovery/
first 24 hour/workstream management)

22

Continue Urgent Measures

Use the powers and provisions of the Biosecurity Act 1993 to impose risk management measures

PRESERVE RESPONSE OPTIONS
Minimise impact, control spread, reduce distribution

DEVELOP THE PLAN / ASSESS RISK AGAINST VALUE / APPROVE THE PLAN

24

Evaluate & Approve Response Direction
Outcomes/options/approach/
resources/cost

26

Approval to Proceed?

NO - rework options

NO - standown

Standown Response

SUBMIT partial or full plan to RSL

23

Develop Response Plan
Outcomes/options/approach/
resources/cost

25

Stand Up Response Work Stream Teams

YES - Release Response Plan

... & advise

28

Confirm Response Work Stream Team Readiness

29

Develop Operation Specification
(The detailed plan)

30

Set Up Field HQ's
(if applicable)

PREPARE FOR EXECUTION

NOTIFY

27

Determine if Urgent Notifications are Required & Release

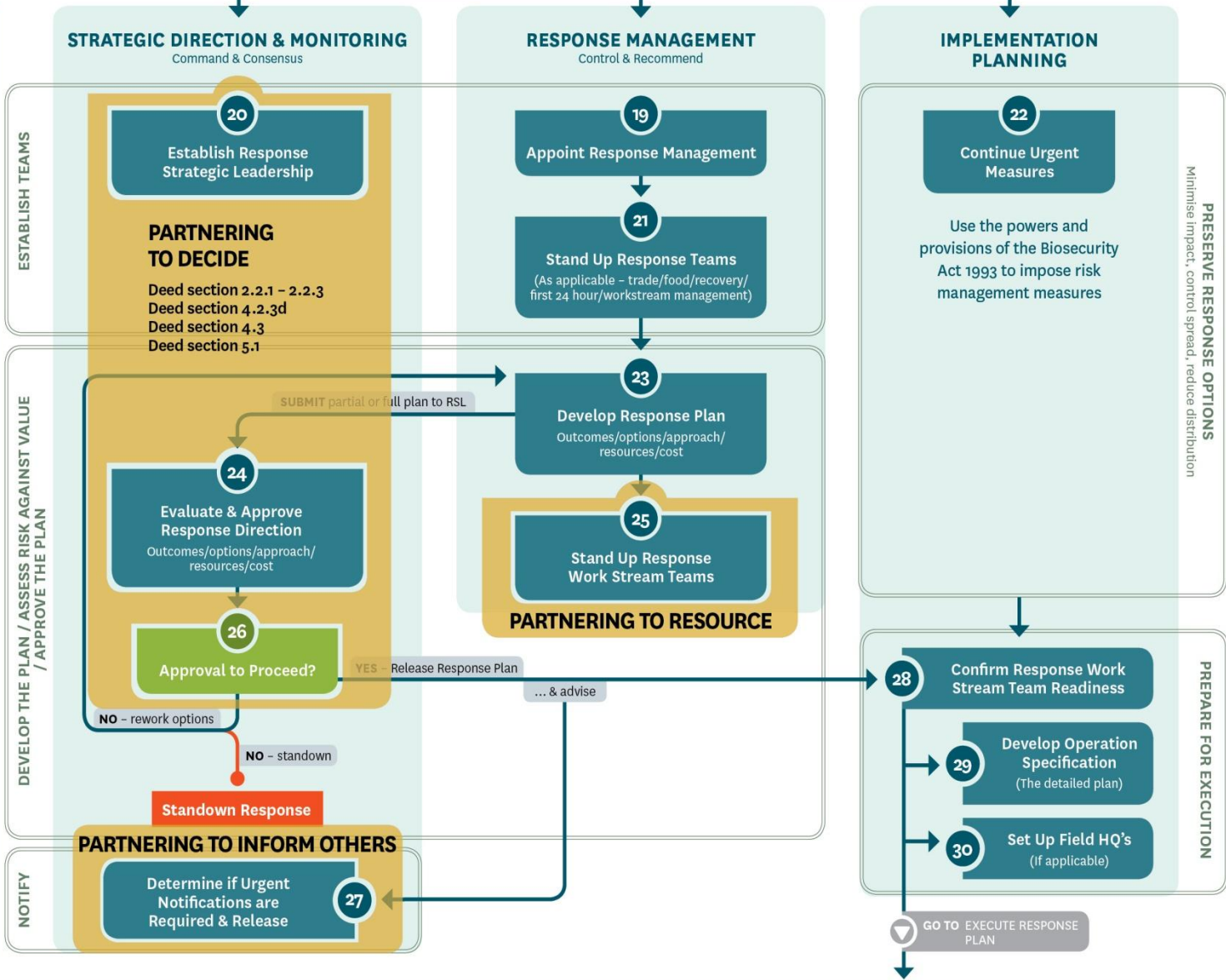
GO TO EXECUTE RESPONSE PLAN

4 ESTABLISH RESPONSE TEAMS & DEVELOP PLAN

DRAFT

FROM RECOMMEND & PRIORITISE

PARTNERSHIPS IN ACTION
RESPONSE MODEL
 AIM: Determine response outcome feasibility / assess & decide response plan to proceed

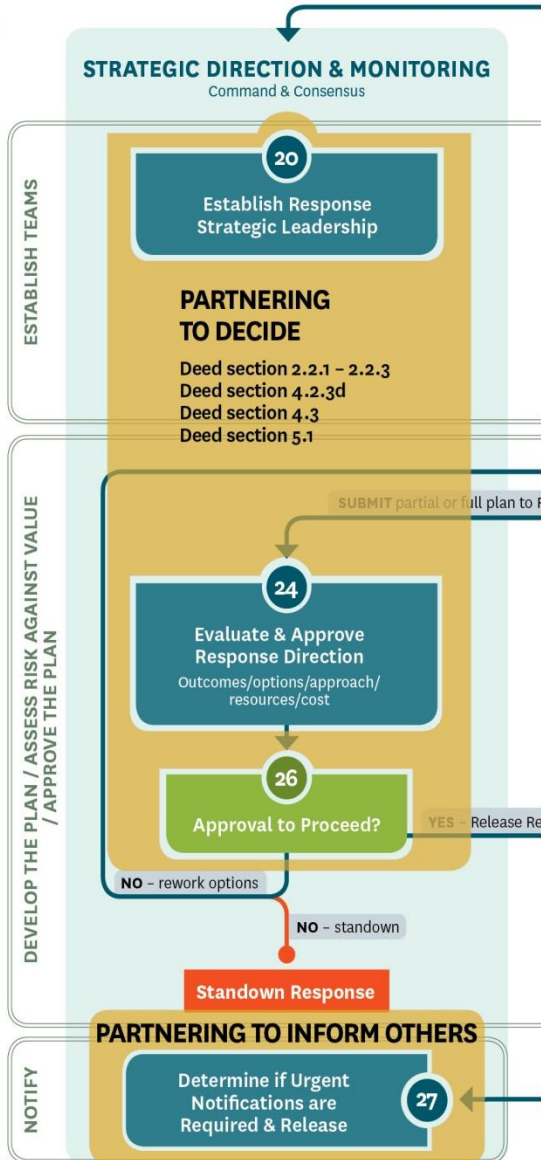


4 ESTABLISH RESPONSE TEAMS & DEVELOP PLAN

PARTNERSHIPS IN ACTION

RESPONSE MODEL

AIM: Determine response outcome feasibility / assess & decide response plan to proceed



PARTNERING TO DECIDE

20 24

The establishment of the Response Strategic Leadership (RSL) team **will include the affected Industry Representative(s) where a GIA Deed has been signed.**

RSL is set up with the authority to decide through consensus:

- the strategic direction for the response through contribution to and agreement of the priority response outcomes (e.g. biosecurity vs trade vs production, commercial vs country freedom etc)
- the response options and the approach (immediate, medium and long term) to achieve the agreed outcomes
- response costs (*as supported by an existing GIA Operational Agreement*)
- the response review triggers to determine response stand down or transition
- the release and securing of key response resource allocations

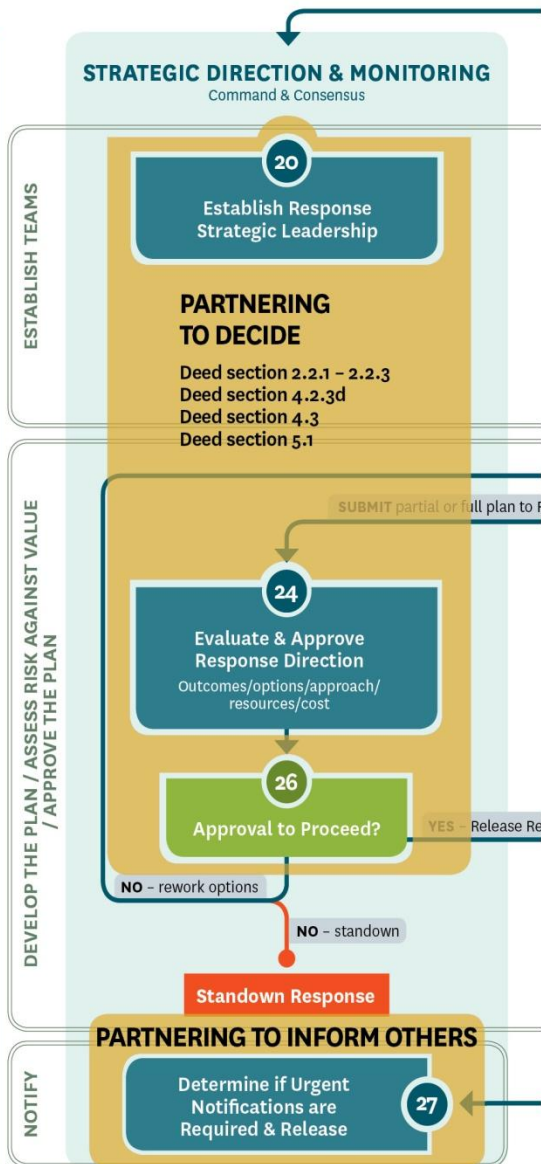
4

ESTABLISH RESPONSE TEAMS & DEVELOP PLAN

PARTNERSHIPS IN ACTION

RESPONSE MODEL

AIM: Determine response outcome feasibility / assess & decide response plan to proceed



26

SUPPORTING INFORMATION

The creation of the RESPONSE BRIEF - this provides detail of the Response Plan which includes what the response is trying to achieve (the **outcomes**), identifies response **options**, defines the response **approach** (until such time if/when significant changes to the plan arise), outlines **resources** required and **funding** required as based on indicative costs.

DECISION CRITERIA

- Risk Likelihood and Consequence – confirmed threat to the values of NZ (**economic, environmental, human health and/or socio-cultural**) posed by a biosecurity issue including **risk organism importance, response complexity and barriers**
- Response outcome **feasibility (technical, people / financial resource capacity against response options)** and relative response **priority** (with respect to all other active MPI responses as determined by **public interest and profile, complexity of issues and level of uncertainty, speed of decision making required, people resource and funding availability**)
- cost-benefit analysis against the above criteria

WHO DECIDES

Response Strategic Leadership team **including the affected Industry representative(s) where a GIA Deed has been signed**

HOW DOCUMENTED

RESPONSE BRIEF and RSL MEETING MINUTES

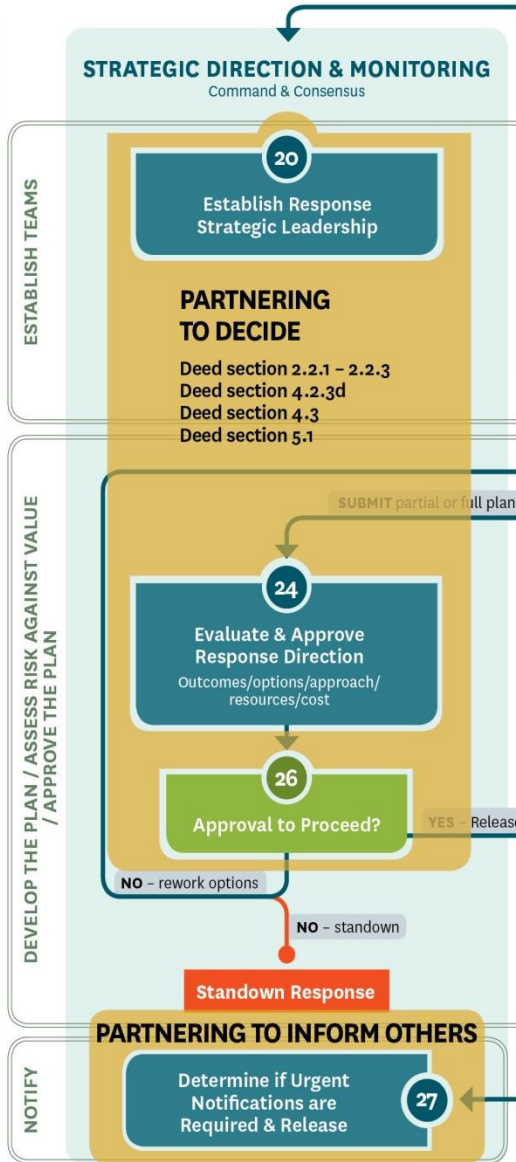
4

ESTABLISH RESPONSE TEAMS & DEVELOP PLAN

PARTNERSHIPS IN ACTION

RESPONSE MODEL

AIM: Determine response outcome feasibility / assess & decide response plan to proceed



To enable this, Industry must provide delegated authorities (key contacts) to sit in the RSL team who have the appropriate Industry knowledge and financial delegations to enable effective strategic decision making across these delegated responsibilities.

Developing the Response Model Communications Tool

- We are working on capturing each stage of the seven response stages of the **R** with displays and explanations like this – what you see here is a prototype
- The resulting communications tool will be useful for:
 - everyone understanding the Response Model and how it might work under the GIA partnership
 - where and how joint decision making occurs
 - training and communication
- We are very keen for industry input:
 - into the ongoing development of the tool
 - user testing
- Interested?
 - contact the Secretariat today

Ministry for Primary Industries
Manatū Ahu Matua

Biosecurity surveillance guide

An introduction to biosecurity surveillance – help protect New Zealand by learning about the benefits and methods of surveillance. Developed by the MPI Surveillance and Incursion Investigation Group to support New Zealand's surveillance stakeholders.

START >
Access the whole guide here or use the menu below to access specific topics.

QUICK LINKS

- Create your own surveillance design
- Biosecurity Surveillance Quick Reference Guide [PDF]

WHAT CAN SURVEILLANCE DO FOR ME?

- The power of surveillance
- Working together
- Get ready

HOW DOES SURVEILLANCE WORK?

- The dynamics of surveillance
- Surveillance objectives
- Surveillance approaches
- Surveillance design guide**
- Completing the process

Click here to find further resources

ABOUT US DISCLAIMER

New Zealand Government

Ministry for Primary Industries
Manatū Ahu Matua

Biosecurity surveillance

The power of surveillance

YOUR PROGRESS

MENU

Surveillance works!

Example: Red Imported Fire Ant (RIFA) (*Solenopsis invicta*)

Ants are very good "hitch-hiker species" and are often transported on plant products or inanimate objects including machinery, personal effects, used vehicles and shipping containers.

If RIFA were to establish in New Zealand the impact would be severe.

Click the icons to see why

Learn about the National Invasive Ant Surveillance programme >>

Red Imported Fire Ant

Red Imported Fire Ant sting

Next see who is involved and why working together is important

HELP NEXT

Ministry for Primary Industries

Biosecurity surveillance

Working together

YOUR PROGRESS

MENU

Why is working together important?

Working together is important to ensure all aspects of a risk organism are carefully considered.

- Stakeholders** may be directly or indirectly affected by a risk organism or biosecurity surveillance activity.
- Members of the public** also have a vital role in supporting biosecurity surveillance as they go about their day-to-day activities.

Close involvement and collaboration between stakeholders in biosecurity surveillance will create an environment where duplication of effort is minimised and synergies available from working together are identified and achieved.

There are many areas where increased collaboration, engagement and communication will result in **significant improvements** in biosecurity surveillance. These include co-ordination of research, biosecurity surveillance delivery and the sharing of expertise and information.

Hyphantria cunea (Fall webworm)

Click here for a case study about the benefits of engagement and working together

Next see what you need to think about before you start

HELP NEXT

Growing and Protecting New Zealand

New Zealand Government

Ministry for Primary Industries

Biosecurity surveillance

Surveillance design

Growing and Protecting New Zealand

YOUR PROGRESS

MENU

Decision pathway applied

Now compare how our decision pathway applies to selected MPI surveillance programmes.

Arboviruses Fruit Fly Saltmarsh Mosquito **Your Example**

1 Select Objectives 2 Select Hazards 3 Select Units 4 Select Timing 5 Select Additional Features

Create your own decision pathway.

Click the tabs for **Arboviruses**, **Fruit Fly** or **Saltmarsh Mosquito** to get examples of the decision pathway applied. Select one of the 5 steps within each example to learn more about each case-study.

Your example:
Create your own example by choosing **Your Example** and add details of your steps to the fields provided. You can EXPORT your example to a text file or PRINT it.

Next complete the process

HELP NEXT

Growing and Protecting New Zealand

New Zealand Government

Thank you and remember.....

To report suspected exotic land,
freshwater and marine pests, or exotic
diseases in plants or animals, call:

0800 80 99 66

Ministry for Primary Industries
Manatū Ahu Matua

